



EROSION CONTROL

Installation Supplies

When it comes to erosion control, selecting the right materials is only half the battle. You also need to make sure that you have the right installation supplies and techniques, whether the project is for erosion control, weed control, slope stabilization, or underlayment. To keep the project site in compliance, the right anchoring style and anchor placement is also critical. We have all the supplies you need, and our specialists are here to answer your questions.

Natural & Biodegradable Installation Supplies

Besides offering erosion control, weed control, and slope stabilization, biodegradable erosion control materials like coir or straw also provide an environment that helps young seedlings grow. By the time an erosion control blanket has fully decomposed, the plants will have taken over to provide the long-term erosion control needed for that location. Likewise, biodegradable anchoring also disintegrates over the lifespan of the project.

Biodegradable Net Pegs

Net Pegs provide a biodegradable alternative to metal sod staples. They hold netting and lightweight natural erosion control materials securely in place for 12 to 24 months before decomposing.

Net Peg size: 3.5" Long



Biostakes

Biostakes are the preferred fabric anchors for short-term biodegradable erosion control projects. The ribbed stake provides secure traction for holding the erosion control fabric in place. Manufactured from 100% recycled plastic resins, the stakes biodegrade completely within 24 to 36 months, ultimately leaving no trace behind.

6" stakes, in boxes of 600



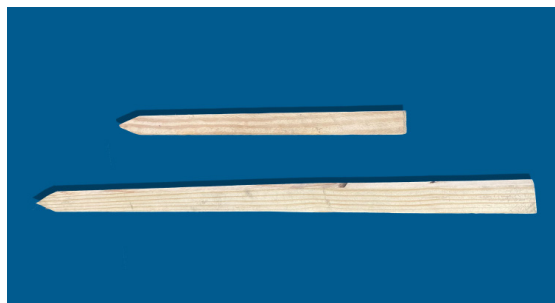
Hardwood Stakes

Made from eastern hardwood lumber, hardwood stakes provide a long-lasting and natural solution for holding erosion control and slope stabilization fabrics like coir, straw, jute or excelsior in place on longer-term projects.

Sizes:

1.25" x 1.25" x 36" 1.25" x 1.25" x 48"

1.50" x 1.50" x 36" 1.50" x 1.50" x 48"



EROSION CONTROL

Installation Supplies

Coir Fiber Twine

Natural and fully biodegradable, coir fiber twine is spun from coconut husk fiber. While practical to have on the job site for a variety of uses, coir twine is also perfect for tying wattles.

Roll Length: 425'



Grade Stakes

Also known as surveyor's stakes, use grade stakes to help mark project boundaries and to determine the slope/grade of the project area.

Available in lengths of: 18", 24", 36" or 48"



Installation Instructions:

- [Log Installation Guide](#)
- [Wattle Installation Guide](#)
- [Blanket Installation Guide](#)

Natural & Biodegradable Erosion Control For Sale



Mats

- Straw
- Coir
- Excelsior



Logs

- Straw
- Coir
- Excelsior



Wattle

- Straw
- Coir
- Excelsior



Blankets

- Straw
- Coir
- Excelsior
- Jute

Standard Erosion Control Installation Supplies

For projects using permanent erosion control fabrics like geotextiles or turf reinforcement mats, metal anchoring is both the best and the most economical choice.

Fabric Pins

Fabric Pins are a popular choice for securing thin erosion control or landscaping fabrics (such as nonwoven geotextiles), since they provide extra support in holding the materials firmly in place.

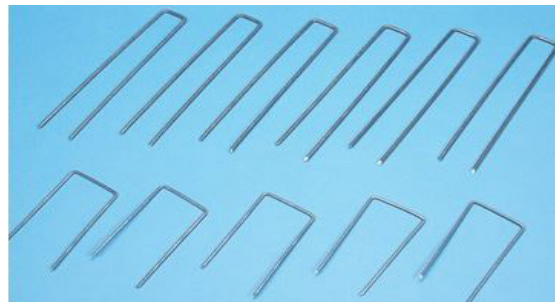
Size	Quantity
12" Pin Length	100/Box
18" Pin Length	100/Box



Sod Staples

Hold erosion control fabrics securely in place with metal sod staples (uncoated). Recommended for use with straw, coir, jute, excelsior, or geotextile fabrics. Follow your project's specifications in selecting the gauge and height needed for the slope and flow for your project site. Staples are available in square or round top styles.

Size	Gauge	Quantity
8" x 1" x 8"	8 gauge	250/Box
12" x 1" x 12"	8 gauge	250/Box
4" x 2" x 4"	11 gauge	1,000/Box
6" x 1" x 6"	11 gauge	1,000/Box
8" x 1" x 8"	11 gauge	1,000/Box



Staple Setters

Your crew will greatly appreciate having Staple Setters on hand. Not only do they make this work easier on the back and less tiring, but Staple Setters also speed up the installation process and provide a more consistent-quality result. Use this basic staple setter with any standard-size landscaping staple for fast application. The 42" handle with magnetic grip pushes staples firmly into the ground.



EROSION CONTROL

Installation Supplies

Synthetic Erosion Control Materials For Sale



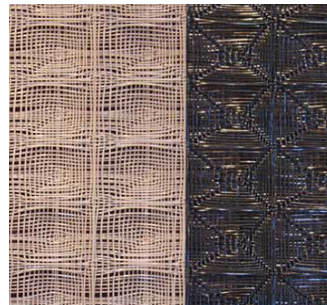
Woven Geotextile

- 150
- 200
- 315



Non-Woven Geotextile

- Lightweight
- Midweight
- Heavyweight



Turf Reinforced Mats (TRM)

- 8 oz
- 10 oz
- 12 oz



Misc

- Poly Wattle
- Rubber Wattle

We are here to serve you. Just call or email with your project specifications and details, and we'll do the rest. Our goal is to provide the best solution for your project, with materials delivered on time at a price that fits nicely within your budget.

Our Websites:

www.collapsiblepillowtank.com
www.erosioncontrol-products.com

www.firesuppressiontank.com
www.plastic-watertanks.com

www.water-storage-containers.com
www.water-storage-tank.com