



Storm Drain Compliance

Filters for Every Drain Size and Style

Storm drains are the gateway to thousands of miles of storm sewer systems and waterways. Left unmitigated, they contribute significantly to pollution and poor water quality. Whether sediment from construction zones, trash, debris, oils or hydrocarbons from vehicles, it all ends up in the waterways, rivers, lakes, and oceans. This impacts water quality, wildlife, and vegetation. Storm drain protection also helps minimize stormwater system maintenance by helping keep pipes from clogging.

Ensuring that you have the right Stormwater BMP for your drains, that they fit, and are installed properly are your keys to not only protecting the watershed, but also in avoiding costly maintenance and non-compliance fees. For help in selecting a style or size storm drain BMP, we are just a phone call away!

Storm Drain Filters & Covers

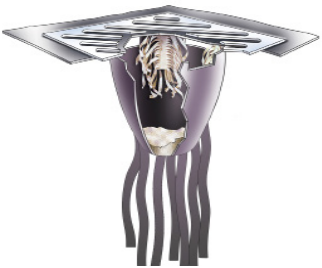
Under-Grate Filters

Under-grate filters are known for their ability to handle a large volume of stormwater while capturing a large quantities of debris and sediment. Since they are below the drain, they are out of sight and more visually pleasing. Under-grate filters are also out of the way of pedestrians, traffic, and street-sweepers.



Ultra Drain Guard

- Exceeds 80% sediment removal efficiency.
- Removes contaminants like litter, sand, and oil from stormwater flow.
- Available in models for: trash & debris; oil & sediment; or oil, sediment, and grease.



Ultra Drain Guard Ultimate

- Filters sediment, oils, and other but also addresses antimicrobial growth.
- Antimicrobial coated Ultra-Filter-Tex tentacles” circulate in the basin to help resolve stormwater-related issues with single-cell organisms (bacteria, fungi, yeast, and algae) that are typically found in catch basins.



Ultra Drain Guard High Capacity

- High capacity catch basin insert captures large amounts (up to 300 lbs) of sediment and oil.
- Built with a heavy-duty, needle-punched geotextile that absorbs oil, grease, and other hydrocarbons.
- Easily installed and secured into place using retainer bars (sold separately).



Ultra Drain Guard Heavy Metal

- Removes heavy metals, hydrocarbons, sediments, and more from stormwater and industrial runoff.
- Accommodates flows up to 275 GPM.
- Stormwater is forced through the heavy metal treatment before entering the storm drain.



Ultra Drain Guard Recycled

- Made completely out of Ultra-Filter-Tex material — 100% recycled content.
- Filter-Tex material captures sediment and hydrocarbons.
- Superior water flow rate.
- Built-in overflow ports prevent ponding and flooding.

Storm Drain Filters & Covers

Under-Grate Filters (continued)



Ultra Drain Guard Economy Frame

- Adjustable catch basin insert quickly re-sizes to fit the storm drain – no trimming of excess fabric required.
- Metal frame adjusts to fit most drains, keeping the filter in place even when grating is removed.
- Removes hydrocarbons, dirt, sand, and more.



Ultra Drain Guard Adjustable Frame

- Quickly re-sizes to fit almost any storm drain – no trimming of excess fabric required.
- The reusable steel frame adjusts and keeps the filter from falling into the basin when the grate is lifted.



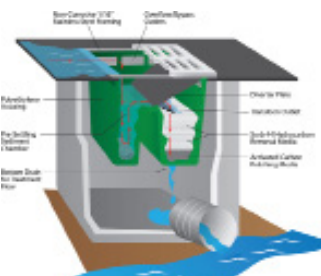
Ultra Drain Guard Reusable

- Rugged polypropylene design that can be easily rinsed and reused, over and over again.
- Can hold up to 500 lbs. of soil, sand, and sediment,
- Designed for easy removal with backhoe, forklift, or other equipment.



Ultra Drain Guard Archea Boom

- Consists of two parts: a Drain Guard to capture sediment and oils, an Archaea Boom to clean up hydrocarbons inside the catch basin.
- Filters and captures dirt, sediment, oil, grease and other pollutants.



Ultra HydroKleen

- Considered a “true filter,” verified by the EPA’s ETV program, exceeding 80% silt removal efficiency.
- Excellent post-construction control for drains that are more susceptible to large concentrations of contaminants (“Hot Spots”).
- Removes hydrocarbons, heavy metals, and sediment.

Storm Drain Filters & Covers

Above-Grate Filters

Over-grate filters provide an alternative to the traditional “below-grate” storm drain bmp that’s much faster to install and does not require lifting the heavy storm grate. Maintenance is also much easier and safer, as your team is exposed to traffic for a much shorter period of time than with the under-grate models. Additionally, there’s no risk of injuries from lifting or dropping the heavy drain grate.



Ultra Grate Guard

- Installs easily with no lifting the heavy grate cover.
- The overflow port prevents pooling in heavy stormwater events.
- One size fits most, but can also be trimmed to size.



Ultra Grate Guard Plus

- For use with flat grate catch basins.
- Allows run-off to flow through while blocking sediment and capturing oil.
- Standard and custom sizes available.



Ultra Basin Guard

- High profile provides additional visibility indicating location of storm drain.
- Prevents silt, sediment, and hydrocarbons from entering storm drains.

Drain Seals & Plugs

Drain seals, also called “drain blockers” provide a quick response option when there’s a spill or event that taints the stormwater. Drain seals block entry to the drain until cleanup measures can take place. There are also occasions when a drain needs to be secured so that no stormwater enters the basin. These BMPs are effective solutions for those circumstances, and a good emergency response item to keep in the toolbox.



Ultra Drain Seal

- Very durable, flexible, and will seal most drains.
- Resists oil, water, and most aggressive chemicals.
- Cleans with soap and water.

Storm Drain Filters & Covers

Drain Seals & Plugs (continued)



Ultra Drain Seal Plus

- Offers the same protection as the Ultra-Drain Seal, but is a better long-term stormwater solution.
- Will withstand extended UV exposure.



Drain Plug

- Keeps spills from entering drains, for compliance with SPCC and NPDES regulations.
- Flexible, non-absorbing material is reinforced with tear resistant mesh.

Curb Inlet Filters

In addition to providing effective filtration, curb inlet bmp's need to be strong enough to handle the natural forces from a stormwater flow. Additionally, they need to keep a low profile with minimal risk to pedestrians passing by. Each of the options below is tailored to accommodate common compliance situations and provide you with a selection of options to suit your site's environment.



Ultra Gutter Guard

- Keeps sediment and other debris out of curb inlets.
- Built-in overflow ports prevent ponding.
- No installation required, simply set in place, allowing a 12" overlap at each end.
- Reusable and made from 100% recycled material.

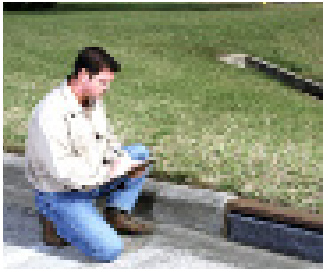


Ultra Gutter Guard Plus

- Designed for curb inlets with high-flow volumes.
- The unique design prevents debris and silt from clogging inlets while keeping the unit secure.
- Can be easily cleaned and reused.

Storm Drain Filters & Covers

Curb Inlet Filters (continued)



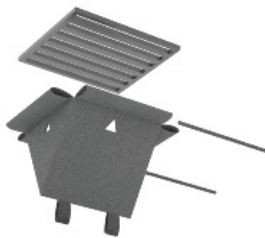
Ultra Curb Guard Insert

- For use in drains with curb inlets only.
- Effective filtration of trash, debris, sediment, oil and hydrocarbons from stormwater.
- Low profile minimizes tripping and traffic hazards.



Ultra Curb Guard Plus

- Handles large volumes of water while staying securely in place to maintain compliance.
- Units can be quickly and easily connected to form longer lengths.



Silt Sack

- Reduces the amount of silt and debris that may enter a storm water inlet during construction.
- These 4' x 2' x 3' sacks are placed inside the storm drain to collect debris as it enters the opening.

Multipurpose (Storm Drains or Curb Inlets)

Use these versatile stormwater compliance tools that can be used for a variety of drain sizes and styles. As additional benefits, they keep costs low and simplify the amount of supplies needed to be kept on hand.



Ultra Filter Sock

- Filters, treats and removes pollutants.
- Media options include: hydrocarbons, odors, sediment, phosphorous, or heavy metal.
- Versatile and easy to install. Use it for storm drains, downspouts, gullies or ditches.
- Can be overlapped for longer coverage.



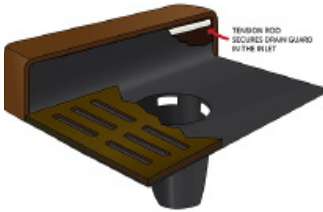
Inlet Cover

- Dual layer of nonwoven geotextile provides filtration, trapping silt as storm-water flows through.
- Low-profile, will not impeded traffic or pedestrians.
- Adaptable to either curb or flat inlets.

Storm Drain Filters & Covers

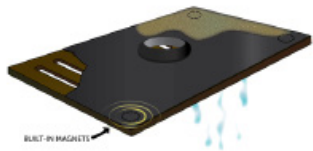
Combination Drains

Combination-drains have both a storm drain and a curb inlet, making them sometimes difficult to get the proper fit for compliance. However, these combination-drain bmp's are designed to fit most common drain sizes and satisfy stormwater compliance requirements with confidence.



Ultra Drain Guard Plus

- Stops oil, sediment, and other debris from entering combination drains.
- This filter marries a curb inlet filter with an under-grate drain guard.



Ultra Inlet Guard Plus Curb Style

- Keeps dirt, sand, sediment, trash, hydrocarbons, and debris out of combination drains.
- Quick and easy installation using built-in magnets — no more lifting of heavy catch basin grates.
- 92 gal/ft²/min. flow rate; built-in overflow port.

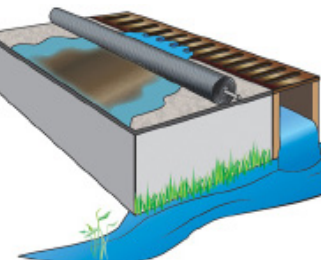
Trench Drains

Trench drains aren't as common as the other styles, but when they feed into stormwater sewer systems, they need to be kept in compliance with clean water regulations too. The stormwater BMP styles listed below are available in models designed to fit trench drains and provide protection from sediment, oils, and other pollutants.



Ultra Trench Filter

- The filter's layers of Filter-Tex filter strips trap sand, silt and sediment while absorbing hydrocarbons also.
- Several units can be connected for use in long runs of trench.



Ultra Trench Filter Boom

- Keeps oil, gas and other pollutants out of trench drains.
- Handles large volumes of water easily.
- Designed to handle vehicular traffic unlike sorbent 'socks' which burst or deform when driven over.

Storm Drain Filters & Covers

Trench Drains (continued)



Ultra Inlet Guard Plus – Trench Drain

- Keeps dirt, sand, sediment, trash, hydrocarbons, and debris out of trench drains.
- Quick and easy installation using built-in magnets — no more lifting of heavy catch basin grates.
- 92 gal/ft²/min. flow rate & built-in overflow port.

Additional Storm Drain Compliance Products



Ultra Sampling Kit

- Microprocessor based turbidity meter provides laboratory precision for field turbidity measurements.
- Kit includes everything needed for testing pH and turbidity.
- Helps comply with NPDES sampling and monitoring requirements.



Ultra Universal Sampler

- Makes testing the effectiveness of stormwater BMP's fast and easy.
- Sampling device fits through most drains and overflow ports without lifting grates.
- Built-in pump draws water for testing.



Drain Markers

- Helps inform the public that storm drains go directly into waterways untreated.
- Installs quickly and easily using permanent adhesive.
- Designed for long life; heavy-duty plastic construction is scratch-resistant and will not rust or corrode.



Ultra Grate Hook

- Heavy-duty steel hook fits all grates.
- Helps prevent back and other injuries.
- Portable and compact for easy storage/transport.

Storm Drain Filters & Covers

Additional Storm Drain Compliance Products (continued)



Ultra Grate Lifter

- Can be operated by a single person.
- Reduces strain on back and risk to fingers.
- 400 lbs lifting capacity.
- Disassembles quickly for easy transport.



Ultra Drain Guard Retainers

- Heavy-Duty coated steel retainers secure Drain Guard for easier installation/removal.
- Telescoping retainers adjust to fit almost any size storm drain; use with any Drain Guard style.



Ultra Phos Filter

- Filters phosphorus from stormwater runoff.
- Removes over 90% of phosphorus from water.
- Retains up to 1 1/2 times its weight in phosphorous.



Ultra Filter-Tex

- High-performance sorbent and filter for stormwater and oils.
- Large volume capacity.
- Cost effective. Absorbs 13 times its weight of liquid hydrocarbons.
- 85-90% of sorbed oils can be reclaimed and the fabric reused.

We are here to serve you. Just call or email with your project specifications and details, and we'll do the rest. Our goal is to provide the best solution for your project, with materials delivered on time at a price that fits nicely within your budget.

Our Websites:

www.collapsiblepillowtank.com
www.erosioncontrol-products.com

www.firesuppressiontank.com
www.plastic-watertanks.com

www.water-storage-containers.com
www.water-storage-tank.com